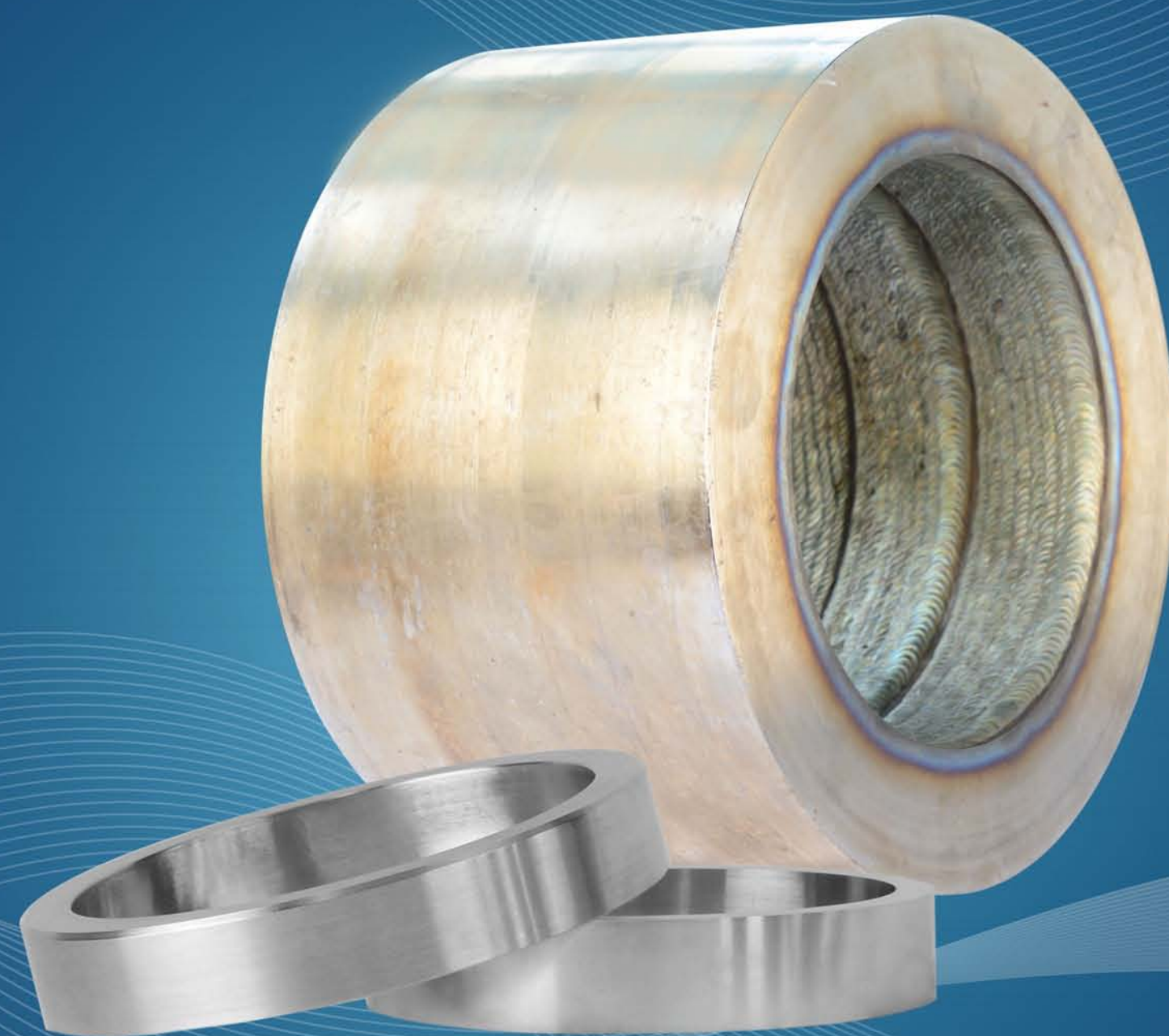


CWE



Cold Weld Engineers Pvt. Ltd.

Corporate Offc.: Shed No.11, Gate No. 4, Siddhpura Indl Estate, S.V. Road, Behind Kamat Club, Goregaon West. Mumbai - 62

Tel: + 91-22-2874 8482, + 91-22-2878 6395 Fax: + 91-22-2874 8481

Factory Site: 22 / 23, Gokhivare Village, Sativali Road, Near Range Office, Vasai (E), Dist - Thane, Maharashtra - 401 208, India.

Tel: 0250 6456884 to 99 Fax: 91-250 - 2453219

www.coldweldengineers.com pranav@coldweldengineers.com yogesh@coldweldengineers.com



WEAR RINGS

P R O D U C T C A T A L O G U E

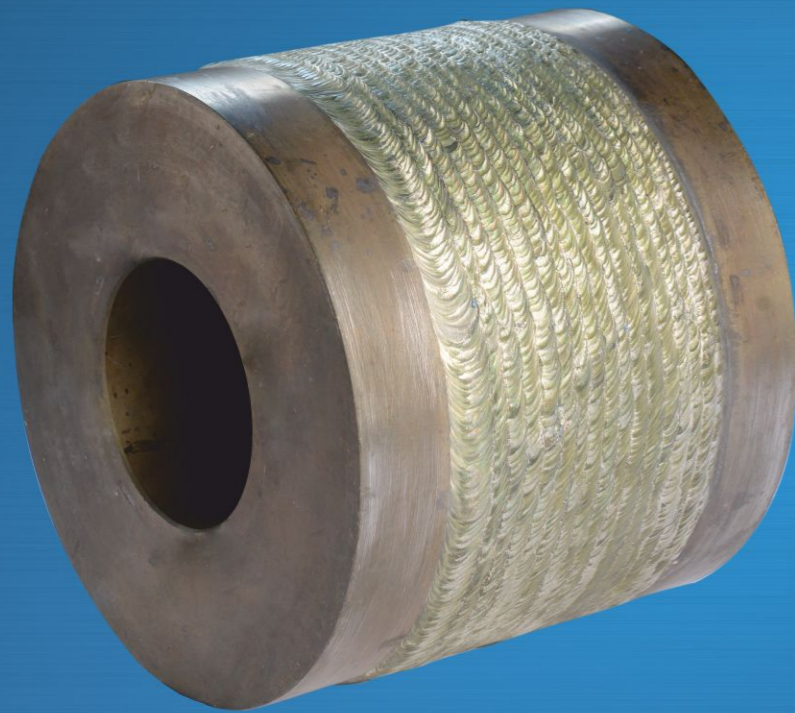
Striving on its experience in welding, Cold weld has extended its reach to the jobs under preventive and breakdown maintenance.

Jobs cater mainly to the pumps and valves industry.

Various kinds of rotating and stationary pump and valve components have to be protected with wear parts for proper functioning and prolonged life of the pump and valve body.

Part of the jobs are supplied in as cast and machined condition while others involve value addition in form of various kinds of overlay giving resistance to wear, abrasion, metal to metal friction and capacity to retain hardness at elevated temperature.

Different Base Material



Austenitic Stainless Steels

- a) ASTM A 743 Gr CF8, CF3.
- b) ASTM A 743 Gr CF8M, CF3M.
- c) ASTM A 276 Gr 347

Martensitic Stainless Steels

- a) ASTM A 743 Gr CA-15
- b) ASTM A 276 Gr 420

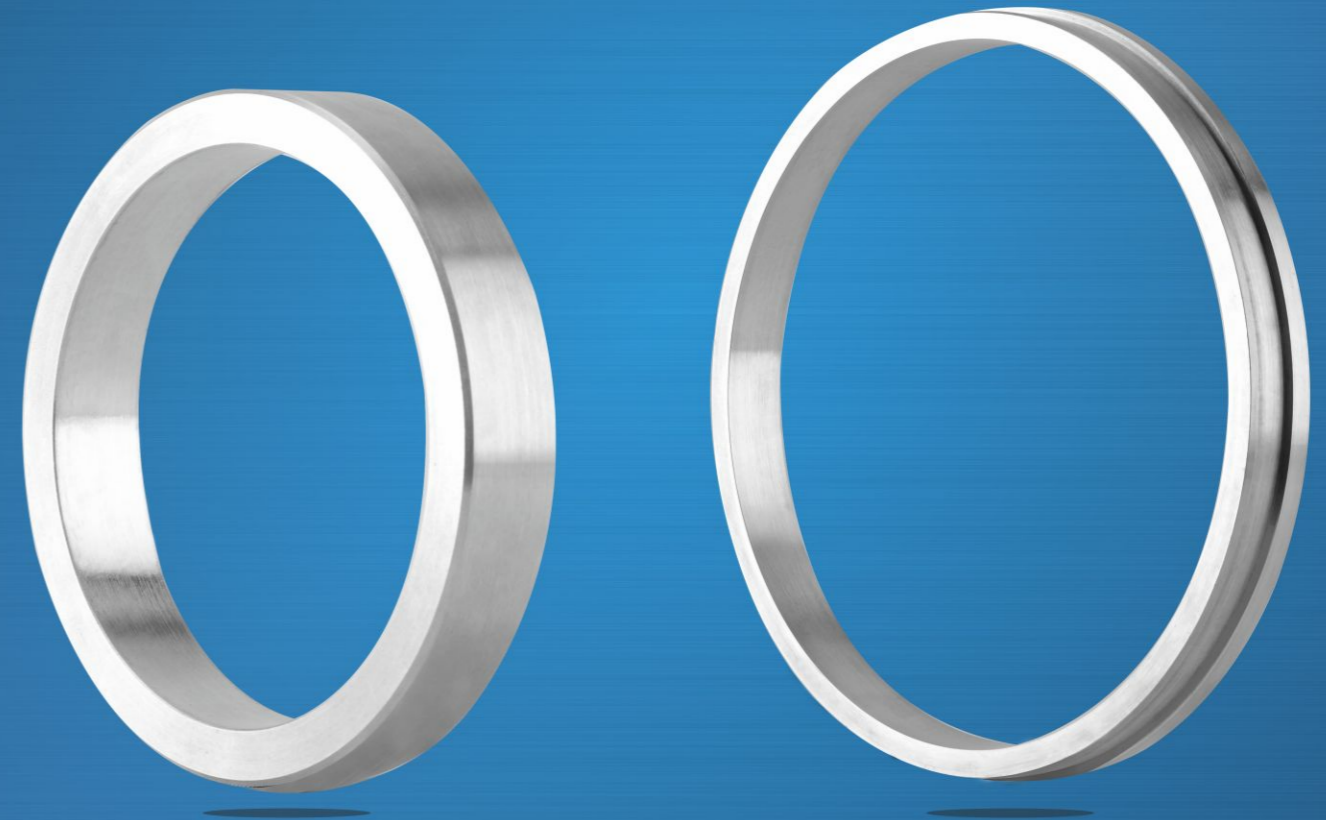
Duplex Stainless Steels

- a) ASTM A 890 Gr 3A (CD6MN)
- b) ASTM A 890 Gr 5A (CE3MN)
- c) ASTM A 890 Gr 1B (CD4MCuN)



Different Types of Weld Overlay

- Cobalt Alloy 6
- Cobalt Alloy 12
- Cobalt Alloy 1
- Cobalt Alloy 21
- Nickel Alloy 5
- Nickel Alloy 6
- Nickel Alloy 53
- Nickel Alloy 63



Application

Impeller Wear Rings	Centre Bushing	Balance Drum Liner
Casing Wear Rings	Interstage Bushing	Seat rings for Valves
Shaft Protection Sleeve	Diffuser Wear Ring	Feeder Extruder Screws
Throttle Bushing	Balance Drum	